



Early Head Start and Head Start Annual Report
2013-2014

Board of Directors

Prentice H. Marshall, Jr.
President

Mark Stenftenagel
Vice-President

Tamar Kelber
Secretary

John Mercado
Treasurer

Jorge Balestra
Eric Clamp

Jon Clopton
Carrie L. Distler

Daniel Greiwe

John Harrington

Elaine Quinn

Andrea Van Gelder

David Villalobos

Management Staff

Mario F. García
Executive Director

Donna Webb
Program Director

Darica Charles
Special Projects Manager

Santa Rivera
Site Manager, Belmont Cragin

Jenny Seacat
Head Start Coordinator

Melisa Larson
Education Coordinator

Jamie Garibay
Recruitment and Enrollment
Coordinator

Lori Hicks
Partnership Coordinator

To the Governing Bodies, Clients, Stakeholders and Staff:

Onward Neighborhood House has been a cornerstone in the West Town community since the late 1800's and has been providing services in the Belmont Cragin community for 6 years. The agency has provided Head Start services to children and families since the mid to late 60's, during the infancy of Head Start. We are a delegate agency of the City of Chicago for Head Start and Early Head Start. This program year the agency submitted Request for Proposals for Head Start and Early Head Start. The agency was awarded 249 slots for Head Start and 12 slots for Early Head Start. Currently, over 98% of the families are income eligible and the average monthly enrollment represents over 98% of the funded enrollment. We currently employ 64 full time staff that is charged to the Head Start and Early Head Start budgets. With the exception of the home based program option and the partnership program, the agency receives funding from Chicago Public Schools and childcare to allow for full time, year round programming.

Our program operations and evaluation is based on 2000 performance standards (CFR 1304, 1306, 1308, 1310) and administrative requirements (Section 644 of the Head Start Act 42 U.S.C. 9839) and OMB Circular A-133 regulating federal grants.

Education & Early Childhood
Development
Child Health & Development
Child Health & Safety
Child Nutrition
Child Mental Health
Family Partnerships
Program Governance
Human Resources Management
Facilities, Materials & Equipment

Finance
Internal Controls
Children with Disabilities
On-Going Monitoring
Self-Assessment
Shared Decision Making
Planning
Communication
Record Keeping and Reporting
Eligibility, Recruitment, Selection,
Enrollment and Attendance

"Improving Head Start for School Readiness Act of 2007" requires programs to present an annual report to the public. I am pleased to provide this snapshot of Onward Neighborhood House's Head Start and Early Head Start comprehensive programming.

Donna Webb
Program Director

Locations

West Town
600 N. Leavitt St.
Chicago, IL 60612
17 Head Start

Belmont Cragin Center
5423 W. Diversey Ave.
Chicago, IL 60639
55 Center Based Head Start
33 Home Based Head Start
12 Center Based Early Head Start

Partnership Sites
157 Head Start

New Beginnings Day Care
3800 N. Austin Ave.
Chicago, IL 60634

ABC Preschool
3001 W. Diversey Ave.
Chicago, IL 60647

La Escuelita
5445 W. North
Chicago, IL 60639



Policy Committee

Chairperson: Sylvia Manriquez
Vice-Chairperson: Stephanie Toney
Secretary: Stephanie Sanchez
Citywide Delegate: Elisa Sanchez
Board Member- Elaine Quinn

Parent Member: Xochilt Diaz
Parent Member: Maria Labotos
Parent Member: Angelica Gonzalez
Parent Member: Esperanzita Munoz
Parent Member: Jessica Torres
Community Representative: Siobhan Cassidy
Community Representative: Wanda Vasquez

Demographics

West Town

Head Start
17 students

3% Black
30% White
15% Multi-racial
52% Hispanic

6 Administrative Services
2 Teachers
6 Support Services
1 Family Support Worker

Belmont Cragin

Head Start
79 students

2% Black
1% Multi-racial
96% Hispanic
1% American Indian

3 Administrative Services
8 Teachers
4 Support Services
1 Family Support Worker
2 Home Visitors

Touch By An Angel

Head Start
20 students

86% Black
14% White

2 Administrative Services
2 Teachers
1 Family Support Worker
3 Support Services

New Beginnings Day Care

Head Start
60 students

2% Multi-racial
83% Black
2% European
13% Hispanic

3 Administrative Services
8 Teachers
1 Family Support Worker
3 Support Services

ABC Preschool

Head Start
16 students

13% Black
70% Hispanic
13% Multi-racial
4% Other

1 Administrative Service
2 Teachers
1 Family Support Worker
3 Support Services

La Escuelita

Head Start
77 students

3% Black
82% Hispanic
4 % American Indian
4 % Multi-racial

3 Administrative Services
6 Teachers
1 Family Support Worker
3 Support Services

Belmont Cragin

Early Head Start
12 students

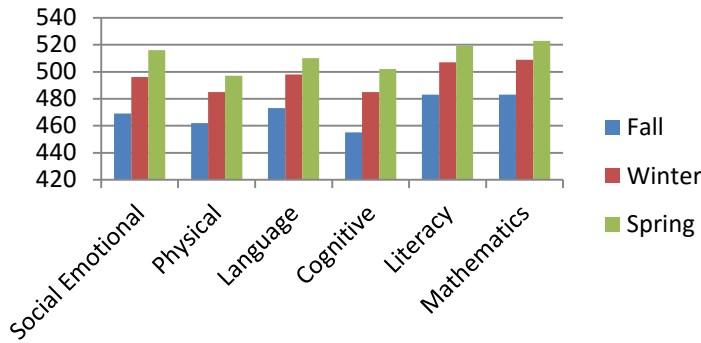
4.5% Black
91% Hispanic
4.5% Multi-racial

3 Administrative Services
4 Teachers
3 Support Services
1 Family Support

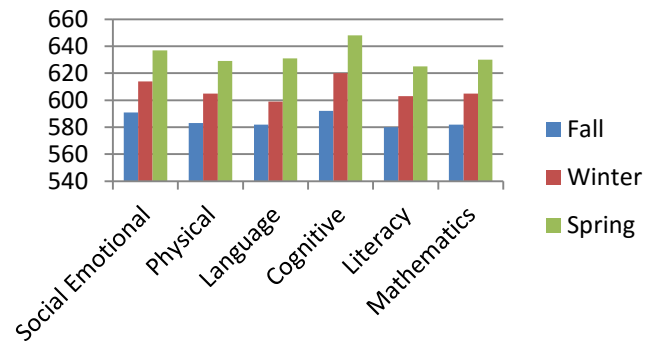


Head Start Outcomes

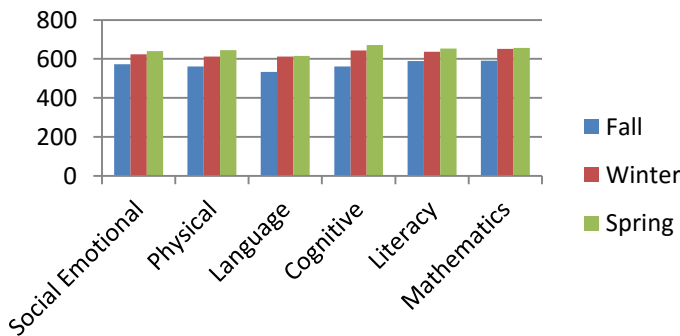
Early Head Start



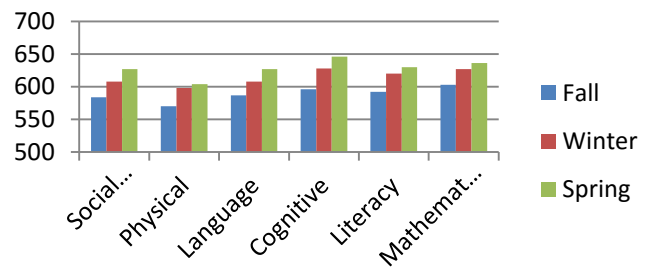
Center Based Head Start



Home Based Head Start

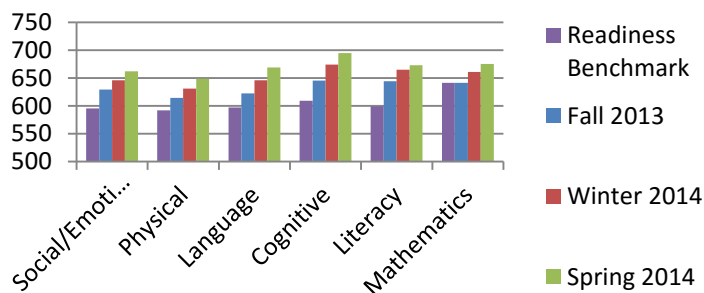


Partnership Program Head Start



Kindergarten Readiness

Kindergarten Readiness of 4 year olds





Parent Trainings

- Child Safety
- Pedestrian Safety
- Car Seat Safety
- Child Abuse & Neglect
- Childhood Development
- Dental Health
- Guidance Discipline
- Domestic Violence
- Mildly Ill/First Aid
- Fire Prevention
- Governance
- Mental Health
- Self- Assessment
- Substance Abuse
- Transition to Kindergarten
- Volunteer
- Nutrition/Healthy Lifestyle
- Budget/Money Management

Family Engagement

- Family Goal Setting
- Family Partnership Agreements
- Family Reading Night
- Parent Committee
- Parent Policy Committee
- Parent/Teacher Conferences
- Socialization Opportunities
- Parental Planning of Student Goals
- Intervention Supports
- Home Visits
- Kindergarten Readiness
- Father Involvement

Community Partnerships

- All Star Dental
- Chicago Children’s Museum
- Chicago Police Department
- Chicago Public Schools
- Chicago Youth Centers, Centro Nuestro
- Child & Family Connections #11
- Dental Dreams, LLC
- El Rincon- Illinois Department of Transportation
- Family Focus
- Family Resource Center for Disabilities
- University of Illinois Cooperative Extension
- Infant Welfare Society of Chicago
- Metropolitan Family Services
- National Louis University
- Northwest Side Housing Center
- Northwestern Dental Clinic
- Parent Outreach
- Schubert Elementary
- Spanish Action Committee of Chicago
- St. Augustine College
- St. Peter’s United Church of Christ
- Sonrisa Family Dental
- Trina Davila Community Center
- University of Illinois Center for Literacy
- Westside Health Authority

Child Health

West Town:

Medical Exams Complete: 100%
Dental Exams Complete: 100%

Belmont Cragin HS:

Medical Exams Complete: 100%
Dental Exams Complete: 100%

ABC Preschool:

Medical Exams Complete: 89%
Dental Exams Complete: 82%

New Beginnings:

Medical Exams Complete: 100%
Dental Exams Complete: 100%

Belmont Cragin (EHS):

Medical Exams Complete: 100%
Dental Exams Complete: 100%

La Escuelita:

Medical Exams Complete: 96%
Dental Exams Complete: 97%

Touch By An Angel:

Medical Exams Complete: 90%
Dental Exams Complete: 100%

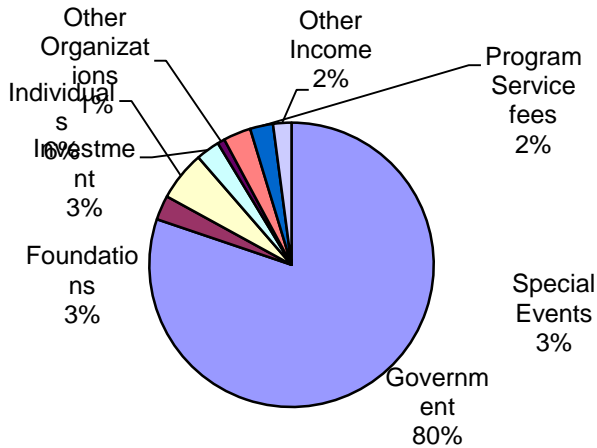


Health Services Advisory Committee

- Jenny Seacat: Head Start Coordinator, Onward Neighborhood House
- Cristal Casino: Health Aide, Onward Neighborhood House
- Patty Voloschin-Weiner, L.C. P. C., M.PH. Mental Health Consultant, Onward Neighborhood House
- Maria Pepito RD, LDN: Nutrition Consultant, Onward Neighborhood House
- Virginia Julion RN: Nurse Consultant, Onward Neighborhood House
- Dr. Sheila Hall: Infant Welfare Society- Dental Provider
- Robin McGinnis-CEO-Infant Welfare Society-Medical Provider
- Roberta Hanson: Parent Liaison, Child & Family Connections #11
- Blanca Rodriquez: Partnership Sites Family Support Worker
- Hilda Martinez: ONH Belmont Cragin HS Family Support Worker
- Jessica Ochoa: ONH Belmont Cragin EHS Family Support
- Roberto Mancilla: New Beginnings Family Support Worker
- Elisa Sanchez: Parent Representative
- Maria Tejada, ONH Home Visitor

Finance

Revenue



Total Revenue: \$3,650,158

Expense

